



AT Series Transformer Testers

AT Calibration System User Manual

(AT3600 + ATi)

ISSUE 4 – 07 SEP 2020

www.voltech.com

Contents

1	Introduction	5
1.1	Features of the Calibration System	5
1.2	Safety Instructions	6
1.3	Risk of Damage to Calibration Fixture	8
1.4	Calibration – General Description	9
1.5	Verification – General Description	11
1.6	Pre-Calibration Verification – General Description	12
1.7	What Else Do You Need?	13
1.8	The Calibration Environment.....	14
2	Getting Started	15
2.1	Package Contents	15
2.2	Automatic or Manual Calibration	16
2.3	Installing the Calibration Program.....	18
2.3.1	MS-DOS Installation	19
2.3.2	Windows XP or 10	20
3	Calibration.....	21
3.1	Quick Start	21
3.2	How Calibration Works.....	22
3.3	Performing Calibration	24
3.3.1	Warming Up and Preliminary Connections.....	24
3.3.2	Starting the PC Software	26
3.3.3	Starting Calibration and Verification	29
3.3.4	Summary of Entered Data	36
3.4	Printing Calibration and Verification Certificates.....	37
3.5	Verification Only.....	38
3.6	Pre-Calibration Verification	39
3.6.1	Starting Pre-Calibration Verification.....	40
3.6.2	Printing Pre-Calibration Verification Reports	42
3.7	Stored Calibration Data	43
4	Calibrating the Fixture	45
4.1	Calibrating the Fixture	45
4.2	Fixture Calibration Method	46
5	Warranty and Service	47
5.1	Warranty.....	47
5.2	Limitation of Warranty	48

VOLTECH AT SERIES CALIBRATION SYSTEM USER MANUAL

5.3	Service	49
6	Specification and EMC Compliance	51
6.1	Specification	51
6.2	Cable Schematics.....	52
6.3	Declaration of CE Conformity.....	53
6.4	EMC Precautions	54
7	Voltmeter Specification	55
7.1	Specification for Suitable Voltmeter	55
8	Troubleshooting.....	57
8.1	‘Failure to Communicate with the DVM’ is shown at the beginning of calibration.	57
8.2	The AT Series Tester fails ‘Self Test’ at the beginning of calibration.....	58
8.3	Calibration or Verification Failure	58
8.4	Certificates do not print.	58
8.5	Errors during ‘High Voltage’ calibration.	59
8.6	‘Error: voltage measurement by DVM outside limits’.....	59
8.7	(Manual Calibration or Verification) – DVM reading steadily drifts downwards....	60
8.8	Calibration or verification certificate states 1MHz rather than 3MHz.....	60

1 Introduction

1.1 FEATURES OF THE CALIBRATION SYSTEM

The Voltech AT Series Calibration System consists of a calibration fixture, a PC (not supplied) running the Voltech calibration software, a printer, and a precision digital voltmeter (not supplied).

- For calibrating Voltech AT series testers such as the ATi and AT3600, but not the discontinued products AT1000 and AT3500.
- All the precision components and circuits are contained within a single fixture that fits into the normal AT fixture position.
- All interconnecting leads except those needed for the DVM are supplied. (Existing PC Editor cable required).
- Semi-automatic or fully automatic calibration process. (For fully automatic calibration, an HP3458A DVM and a PC IEEE interface are required).
- DOS software package with simple user interface controls the entire calibration and verification procedure.
- Software prints a formal calibration certificate.
- Calibration data may be saved to disk as a record of calibration constants and for recording drift between calibrations.
- Stable, precision verification components are supplied and fitted internally. These components may be calibrated externally by a third party to demonstrate complete measurement traceability.

1.2 SAFETY INSTRUCTIONS

CAUTION. RISK OF ELECTRIC SHOCK

General Precautions:

During some stages of the calibration procedure, high voltages are generated on the calibration fixture and on the outputs to the voltmeter.

It is the responsibility of the user to ensure the compliance of the installation and use of this equipment with any local regulations that may be in force.

Only qualified personnel should install this equipment and only after reading and understanding this user's guide.

These operating instructions should be adhered to. If in any doubt, consult your supplier.

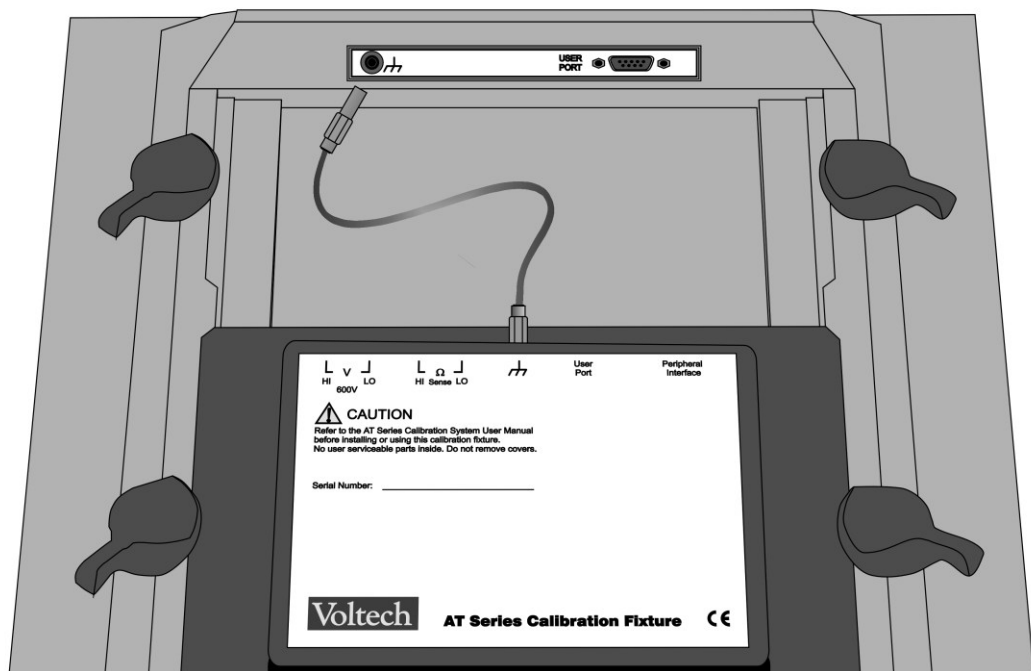
This equipment is for professional indoor use only.

No liability is accepted for the inappropriate, negligent, or incorrect set-up of the instrument by the user, by either manual or automated means.



Caution:

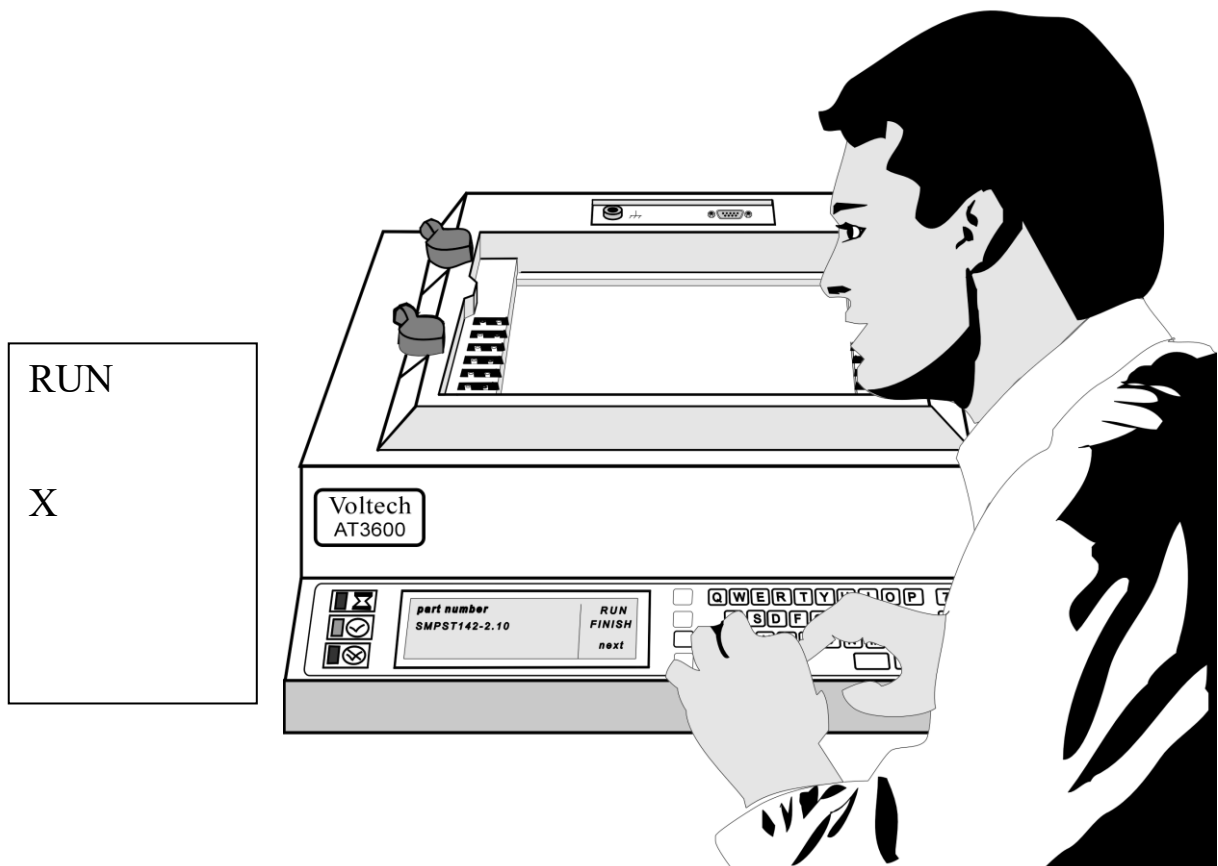
1. Before use, always connect the green earth terminal on the calibration fixture to the green earth terminal that is at the rear of the top plate of the tester.
2. Always use undamaged safety insulated test leads with a rating greater than 600 Volts for connection to the voltmeter.
3. Do not remove the cover from the calibration fixture. There are no user-serviceable parts inside.



1.3 RISK OF DAMAGE TO CALIBRATION FIXTURE

VERY IMPORTANT

Do not run any test programs with the calibration fixture fitted, the signals generated by the AT series testers during normal operation could permanently damage the calibration components inside the fixture.



1.4 CALIBRATION – GENERAL DESCRIPTION

Calibration should be carried out periodically to ensure that the measurements made by an instrument remain within its published specification.

Voltech recommends a calibration interval of one year.

Calibration compensates for the small changes that may have taken place to electronic components and circuits over a period.

The AT series testers make high-precision measurements using a network of amplifiers, current shunts, and analogue to digital converters.

For each range, on each shunt, and at various frequency points throughout the frequency range, the tester must store a calibration constant.

Since the AT series testers are digital instruments, the result of a measurement of voltage or current is a binary number.

The value of this number depends on the shunt used (in the case of current measurements), the settings of the amplifiers, and the output of the analogue to digital converter.

To convert this binary number into a value for the voltage or current measured, the tester uses the stored calibration constants.

Before a new tester is dispatched from Voltech Instruments, it is put through a calibration procedure that applies many voltages and currents throughout the frequency range of the tester.

Each applied signal is measured by the tester and by a very high precision voltmeter, which is itself regularly calibrated and traceable to international standards (NIST and NPL).

The calibration constants within the tester are set for each applied signal, so that its measurements agree with this voltmeter. Currents are calibrated using the same voltmeter and a current shunt.

The purpose of calibration is to set the calibration constants within the tester, so that its measurements are, as far as possible, in agreement with the international standard Volt and Amp.

All the tests carried out by the AT series tester, capacitance, inductance, turns ratio, etc., derive their results through sophisticated algorithms from measurements of the two fundamental electrical quantities of the Volt and the Amp.

1.5 VERIFICATION – GENERAL DESCRIPTION

By making several different measurements, at different operating points, on different sample components, the verification process checks that the calibration has been successful.

Real measurements are made on a series of stable, precision components, and the values recorded are checked against appropriate limits.

The calibration fixture includes a 'standard' capacitor and inductor that may be measured using separate traceable equipment to provide traceability for the verification.

1.6 PRE-CALIBRATION VERIFICATION – GENERAL DESCRIPTION

By making several different measurements, at different operating points, on different sample components, the pre-calibration verification process verifies that the AT series tester is still within calibration.

As part of the pre-calibration verification process, pass or fail verification reports may be printed.

(For more information on how to print verification reports or certificates of conformance and calibration, refer to section 3.4 of this user manual.)

1.7 WHAT ELSE DO YOU NEED?

In addition to the Voltech Calibration System you will need the following:

A 32-bit (NOT 64 bit) PC with MS-DOS version 6, XP or WIN 10 operating system installed

One spare serial port (COM1 or COM2) (can be USB-RS232 converter)

A high-precision voltmeter. The Hewlett Packard HP3458A is recommended (and will be essential if you wish to calibrate fully automatically, see section 2.2). A specification for the required voltmeter is included in chapter 7.

The Editor RS232 cable supplied with your tester.

A Voltech approved safety system, if an AT3600 or AT1600 model is to be calibrated. An interlock bypass may be used, if the calibration is to be performed in an environment restricted to qualified, authorized personnel only. See the AT1600 / AT3600 user manual for the safety interlock specification. Consult your Voltech supplier if you are in any doubt as to the safety requirements.

A printer connected to the PC parallel port, LPT1. (on newer systems this can be mapped to a USB printer for certificate printing)

For fully automatic calibration, an IEEE488.2 communications card or USB-GPIB adapter must be fitted to your PC. See section 2.2 for the difference between fully automatic and manual calibration.

1.8 THE CALIBRATION ENVIRONMENT

Calibration and verification should be carried out in a temperature and humidity-controlled environment where possible. The full specification of the tester is achieved when calibration is carried out:

After a 1-hour warm-up of the AT

At a temperature of $23^{\circ}\text{C} \pm 5^{\circ}\text{C}$.

With 10 to 90% relative humidity, non-condensing.

Calibration at other temperatures is acceptable, particularly if the tester is to be used regularly at that temperature, but you should check the validity of the calibration of the DVM that is to be used at that calibration temperature.

If calibration is to be performed outside a temperature-controlled environment, care should be taken to avoid rapid changes in temperature after warm-up and during the calibration process.

2 Getting Started

2.1 PACKAGE CONTENTS

Your AT Series Calibration System should arrive complete with the following components:

1. A calibration fixture with sockets for connecting to a DVM (digital voltmeter) and an AT Series Tester. (VPN 100-060)
2. Voltech AT Series Calibration System Software on a 3½" floppy disk. (VPN 88-189)
3. Earth lead for connecting to the Earth terminal on top of the AT Series Tester. (VPN 77-021)
4. 9-way to 9-way connection cable with D-type plugs for connecting to the user port of the tester. (VPN 77-020)
5. 15-way to 15-way connection cable with D-type plugs for connecting to the peripheral port of the tester. (VPN 77-019)
6. A certificate of calibration and conformance.
7. A storage box and this user manual.

If any of the above items are missing, please contact your local supplier.

2.2 AUTOMATIC OR MANUAL CALIBRATION

Manual Calibration

A PC + DVM, as specified in Appendix B, are all that is required to complete the calibration system.

Calibration takes approximately 120 minutes, during which you will be asked to enter 30 or more readings from the DVM into the computer.

Automatic Calibration (PREFERRED)

A PC + the HP3458A DVM + an IEEE488 controller fitted to the PC are required for fully automatic calibration.

Calibration will take about 90 minutes; readings from the DVM being taken automatically via the IEEE interface.

Fully automatic calibration is the process used by Voltech and its authorized service centers.

IMPORTANT

For fully automatic calibration, an IEEE488 interface must be fitted to the PC with the latest MS-DOS software drivers for the interface installed and working.

FOR ALL IEEE COMMS, THE HP3458A ADDRESS MUST BE SET TO ADDRESS 22 AS THIS IS HARD CODED INTO THE SOFTWARE

If in doubt, check with the supplier of your IEEE488 interface that you have the latest **MS-DOS** software driver available. This will probably be different to any Windows driver you may be using. Most driver packages include some diagnostic software, and you should run this to confirm that the interface is working before attempting to use the calibration program.

The following interfaces have been tested with the Voltech calibration software, but most interfaces should be compatible. Beware that new PCs do not have an 'ISA' bus. Consult your IEEE488 interface supplier for advice.

National Instruments USB-GPIB- HS

2.3 INSTALLING THE CALIBRATION PROGRAM

The program uses the MS-DOS operating system, a version of which is supplied with all current versions of the Windows operating system.

A PC that has the MS-DOS operating system only can be used, but most users will find it more convenient to use Windows.

Complete instructions are given below, but if you are unfamiliar with creating program items or shortcuts, then you may need to consult your system administrator or the Windows help system during installation.

The PC MUST be 32-bit, NOT 64 BIT.

PC EMULATORS will NOT WORK

The software will work on MS DOS, WIN XP or WIN 10 ONLY

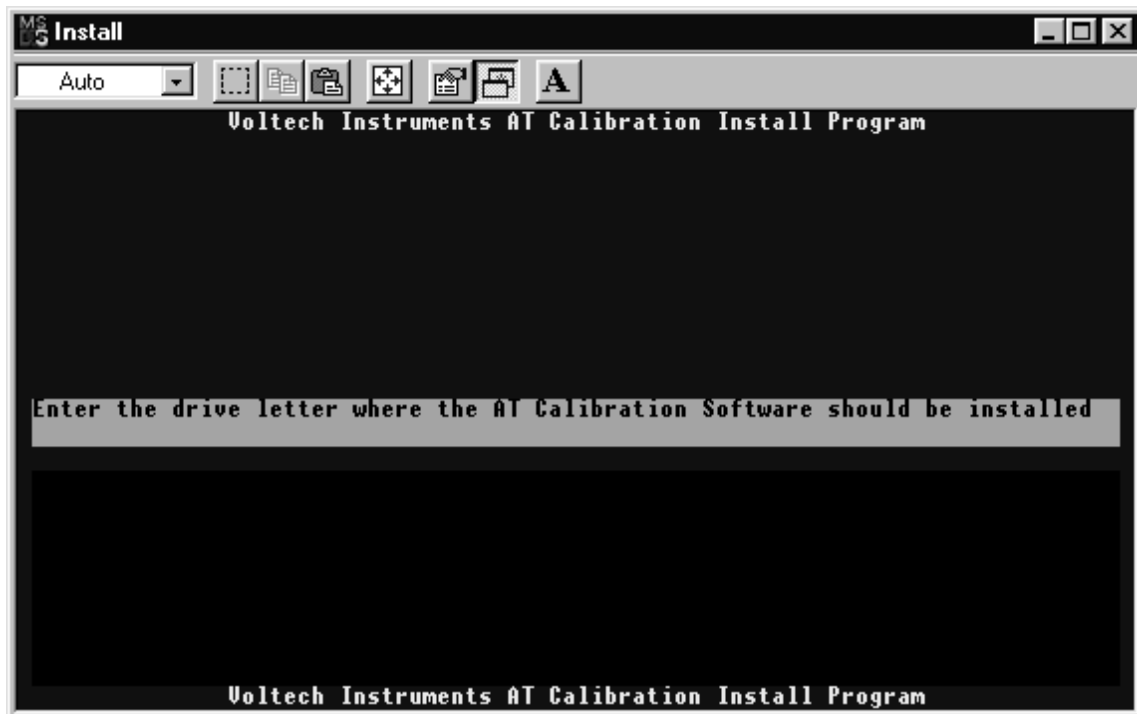
2.3.1 MS-DOS Installation

The PC must be switched on and the command prompt 'c:\>' or similar displayed.

Insert the set-up disk in drive A:.

Type '**a:\install.exe**' and press the return key.

The software will prompt for the letter of the drive on which the files will be



The software will now install from the floppy disk drive to the hard disk drive of the PC. When finished, press any key, and the installation window will close.

To run the program under MS-DOS, simply type

'**c:\atcal\atcal.exe**' for fully automatic calibration using IEEE488 communications to the DVM or

'**c:\atcal\atcal.exe -m**' for manual calibration.

For a 1MHz calibration, add '-1' to the command line, i.e., **c:\atcal\atcal.exe -1** or combine the command line switches for a manual, 1 MHz calibration, i.e., **c:\atcal\atcal.exe -1 -m**.

2.3.2 Windows XP or 10

The ATCAL.EXE can be copied into any folder you want on the PC and run directly from there by double clicking. You do not need to do a formal install.

The software will create subfolders for each unit calibrated as they are calibrated, and store the results in these

IMPORTANT

The 'Command Line:' must read: **c:\atcal\atcal.exe** for fully automatic calibration using IEEE488 communications.

You must add '-m' to this line for manual calibration,
i.e., **c:\atcal\atcal.exe -m**.

For a 1MHz calibration, add '-1' to the command line,
i.e., **c:\atcal\atcal.exe -1**.

You may also combine these command line switches,
e.g., enter **c:\atcal\atcal.exe -1 -m** for a manual, 1 MHz calibration.
Note there is a space before the '-'.

These settings can be changed at any time. The calibration program can now be run by double-clicking on the program item.

3 Calibration

3.1 QUICK START

A brief overview of the process.

If you have used the calibration system before, these instructions may be all that you need.

Check the AT to be calibrated has firmware version 2.45 or greater fitted.
(This is shown on the display of the tester during switch-on).

Warm up the tester for at least 1 hour by simply switching it on.

Connect a safety interlock system (AT3600 only).

Connect the PC to the tester (and DVM for fully automatic calibration).
DO NOT FIT THE CALIBRATION SYSTEM TO THE TESTER.

Run the Voltech calibration PC software.

Press '4' to check the configuration of the system.

Press '1' to start calibration and verification. Follow the on-screen instructions.
You will be prompted to fit the fixture to the tester during this process.

Press '3' to print certificates.

Press '5' to close the program.

3.2 HOW CALIBRATION WORKS

Before starting calibration, the program runs the tester's self test to ensure that the tester is working correctly and can be calibrated. The functionality of the user port is also checked.

Next, a set of precision resistors inside the fixture are measured very precisely using the DVM. These resistors are used as described later.

During calibration the AT Series Tester uses its own internal generators to produce specific voltage and frequency combinations, which are known as calibration points.

For each calibration point on a particular measuring range of the tester, the tester's measurement is compared with that of the DVM. Provided that the DVM reading is within a few percent of the tester's reading, a calibration factor is calculated for each point.

The rest of the tester's ranges are then calibrated by cross-reference to the first range.

The current ranges are calibrated first using the pre-calibrated resistors. After this calibration, current can be measured very accurately by the tester, especially at the calibration points. I

f the same, *very accurately measured calibration point currents* are then generated by *different voltages* across different (but *pre-calibrated resistors*), then the voltage ranges can be calibrated using Ohm's law.

The accuracy of any Voltech tester at its chosen calibration points is significantly better than its published specification.

This allows us to use this method and accurately calibrate the entire measurement range of the tester at high speed and with only a few measurements required from the external DVM.

A calibration factor is calculated for each calibration point, on every range of the tester's measuring circuits. The calibration factors are used by the tester during normal operation to produce calibrated measurements.

3.3 PERFORMING CALIBRATION

3.3.1 Warming Up and Preliminary Connections

Switch on the tester to be calibrated and check the firmware version number that is shown on the display during switch-on.

If that number is less than 2.45, see www.voltech.com for a free-of-charge upgrade.

Leave the tester and DVM switched on for at least 1 hour before starting calibration.

For the AT1600 and AT3600 only, connect a safety system to the safety interlock of the tester. High voltages will be present during calibration.

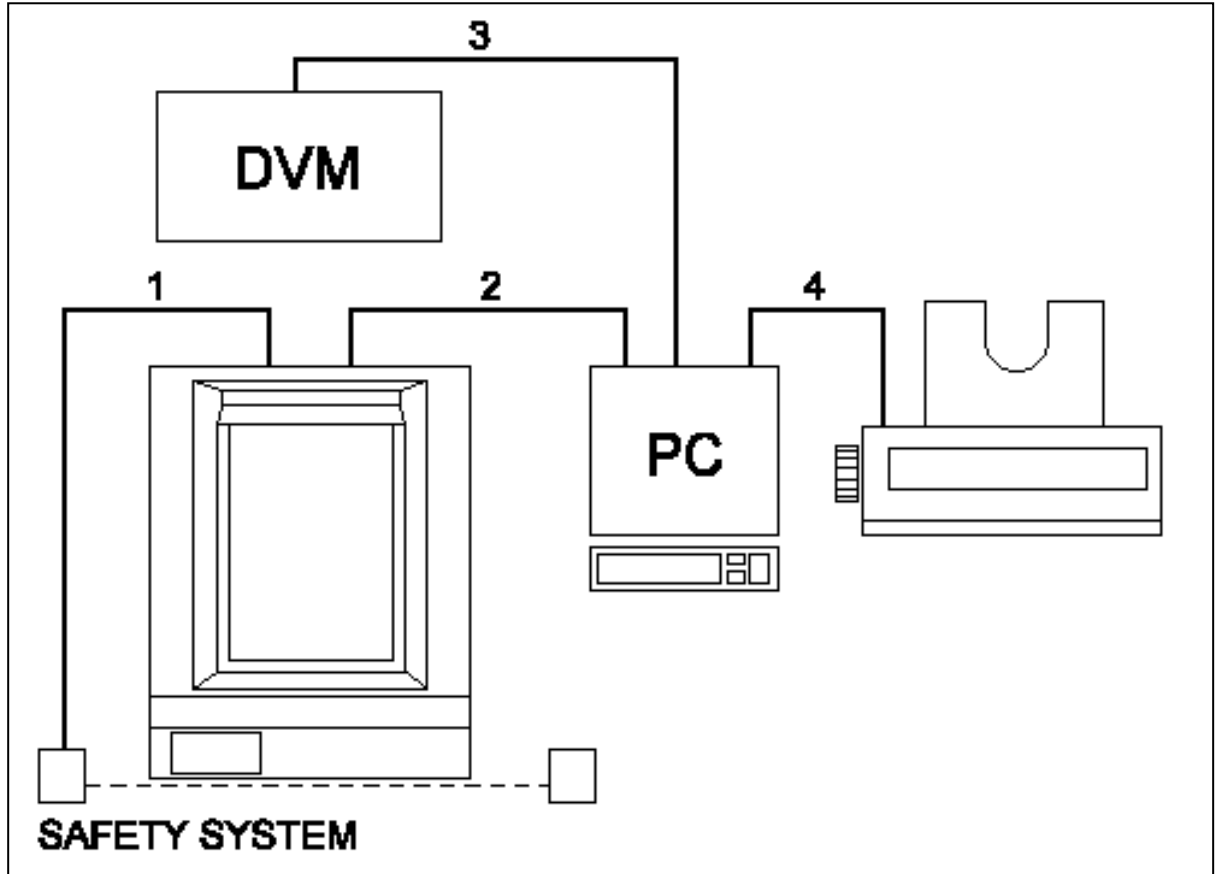
Switch on the PC and confirm the Voltech calibration software has been installed correctly.

For fully automatic calibration only, check that the DVM is an HP3458A and that the PC has an IEEE488 interface fitted, installed and working.

Connect the IEEE488 interfaces of the PC and HP3458A together.

Connect the serial port of your PC to the tester's auxiliary port using the cable you use to program the tester from the Voltech AT Series Editor.

Connect your printer to your PC. If your PC is networked, and you usually use a network printer, this will not be necessary.



3.3.2 Starting the PC Software

Run the program as described in the software installation chapter, 2.3.

The time and date is taken from the PC clock and will usually be correct.



Press '1' to set the time, '2' to set the date, if required.

Then press '3' to continue.



Press '4' to configure the system.



Press '1' to choose between the available COM ports on your PC. This is the COM port that will be connected to the Editor port on the AT.

Press '2' to change the company name. This is the name of the company performing the calibration, and it will be shown on the printed certificates.

Press '3' to return to the main menu once these details are correct.

3.3.3 Starting Calibration and Verification

From the main menu of the software, press '1' to begin the calibration process. You will be asked to confirm that the serial cable between the tester and PC is connected (press 'Enter') and then you will see the following screen:

The top half of the screen is a menu of possible program options, and the



bottom half of the screen will contain information on the current status or progress of the current operation. The most important area is the lighter colored bar across the middle, where you will be prompted for input.

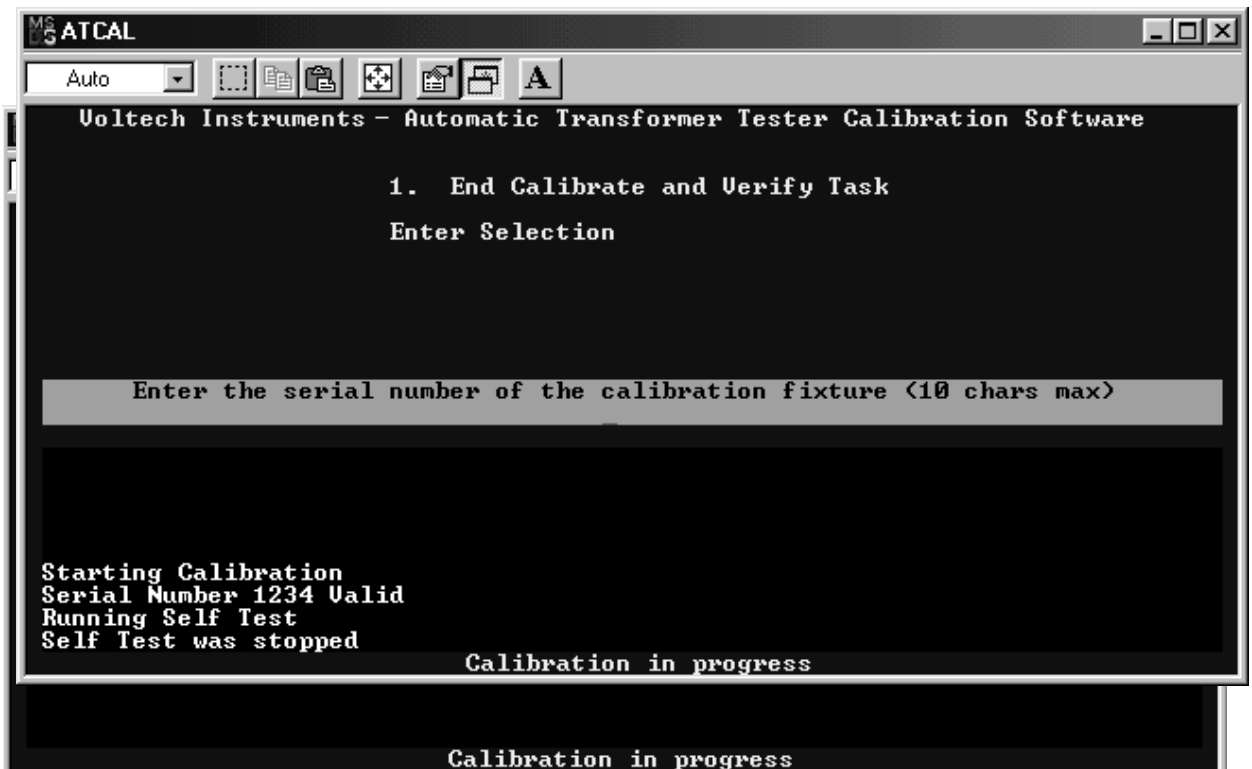
As prompted: 'Remove any fixture and press a key to continue', and the tester will begin a self test to confirm that all its generators, measuring circuits and relays are working properly. This ensures that calibration will be carried out on a fully functioning tester that is fitted with firmware version 2.45 or greater.

You will now see a series of screens prompting you to enter information concerning the calibration fixture and the DVM.

It is important to enter this information correctly because it is used to identify the traceability of the calibration on the final certificate.

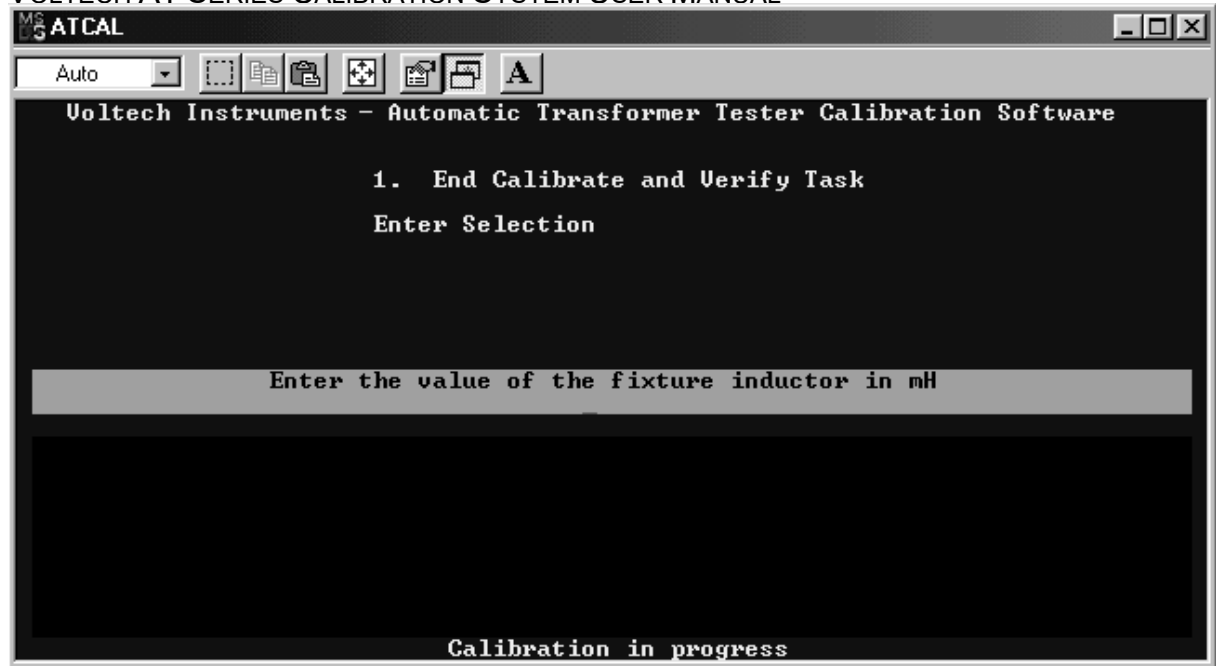
Enter the serial number of the calibration fixture. It will be similar to: TY99/1234. Press 'Enter' and then 'Y' to confirm.

Next, you will be asked to enter the value of the calibration fixture capacitor



value:

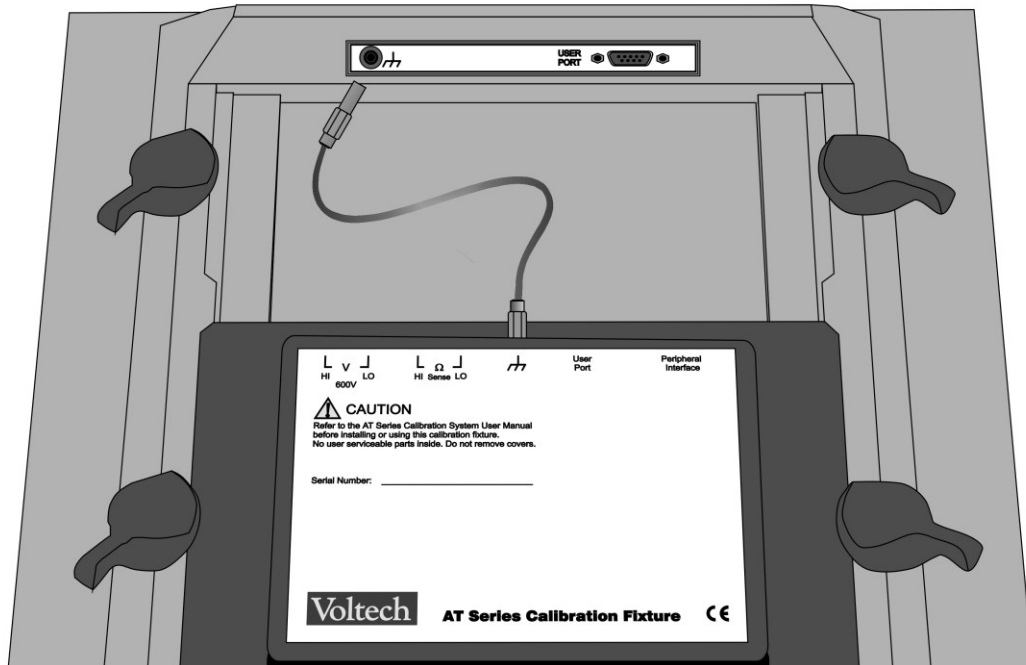
Enter the value of the standard capacitor, as shown on the label on the underside of the calibration fixture in pico-farads (pF). E.g., '98.83'. Press 'Enter' and then 'Y' to confirm.



Then enter the inductor value in milli-Henries. E.g., '1.001'. Press 'Enter' and then 'Y' to confirm.

The software prompt will now ask you to fit the calibration fixture to the top of the tester. Do not forget to connect the green earth socket on the tester to the green socket on the fixture using the green lead provided.

Don't forget to connect the earth lead



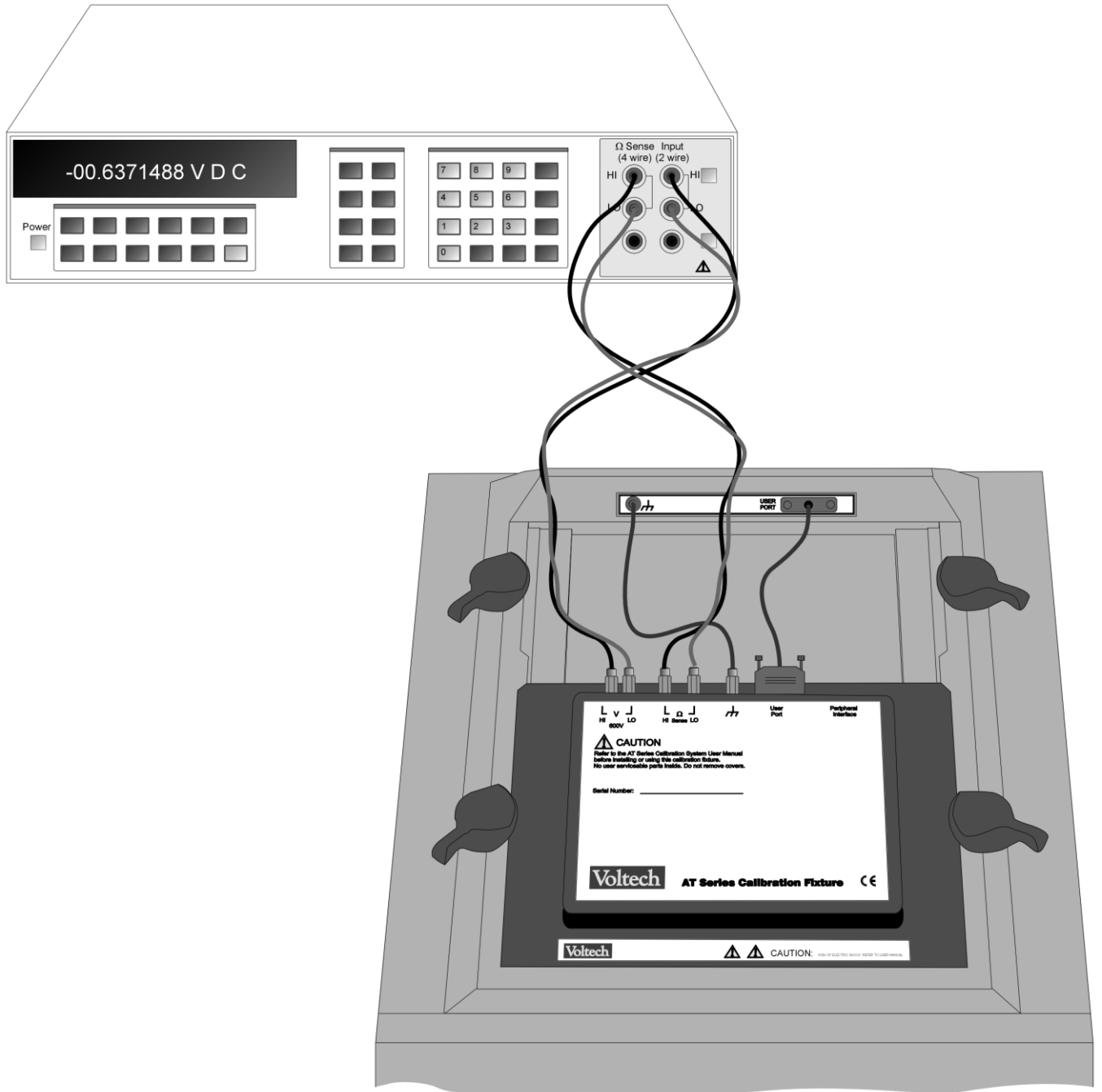
(AT1600 and AT3600 shown)

Press any key and then connect the DVM to the calibration fixture using safety leads that are in good condition and with insulation rated for more than 600 volts.

The cables should be less than 1 meter (three feet) long, and each pair should be twisted together to minimize external interference.

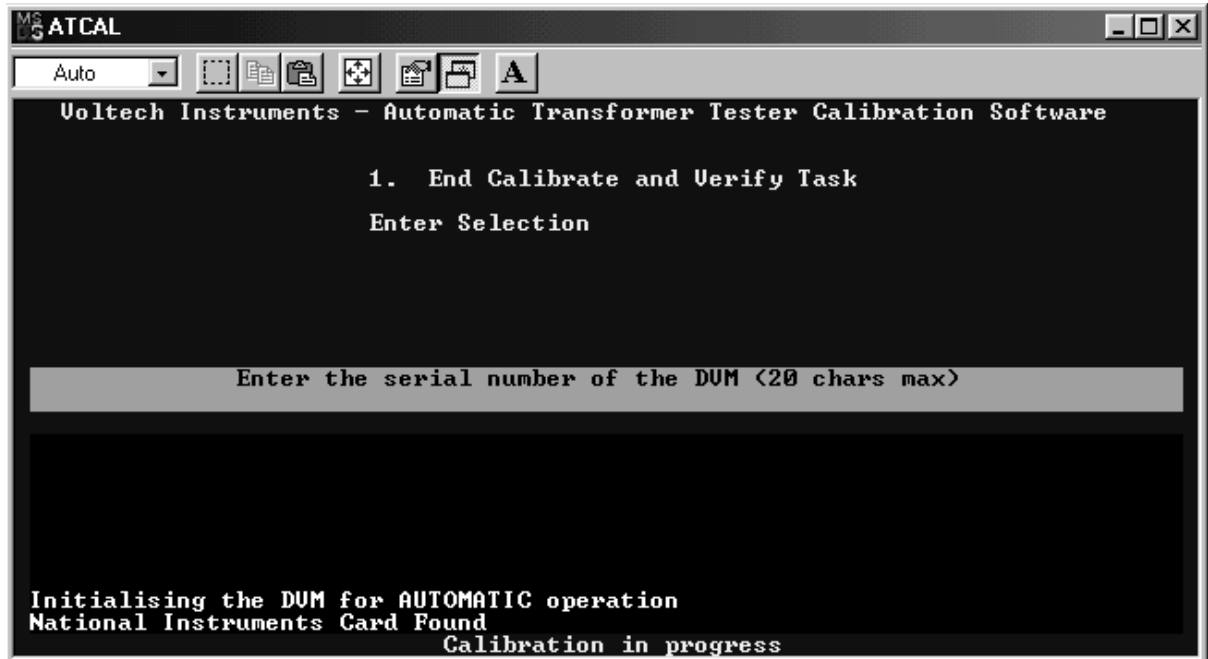
You will need to make a four-wire connection to the fixture, the V hi and lo on the fixture to V hi and lo on the meter AND ohms sense hi and lo on the fixture to ohms hi and lo on the meter.

VOLTECH AT SERIES CALIBRATION SYSTEM USER MANUAL



(AT1600 and AT3600 shown)

Press any key and then enter the serial number of the DVM.



For a manual calibration only, you will also be prompted for the DVM model number. (During a fully automatic calibration, the DVM is checked to confirm it is an HP3458A). Press 'Enter' and then 'Y' to confirm.

Then (as prompted) fit the 9-way to 9-way D-type lead provided between the user port of the tester and the user port of the calibration fixture.

It is not necessary to follow this exact sequence of connections. Once the tester has performed a self-test, the earth, DVM and user port connections can all be made in any order. The software prompts are simply reminders. Calibration will now begin.

Fully Automatic Calibration

No further action is required. The process will take about 90 minutes, during which you will see a large number of measurements being made and calibration constants calculated and stored. At the end of calibration, the process of verification will begin, and you will be asked to confirm the connections as above.

THE IEEE ADDRESS OF THE HP3458A MUST BE 22.

Manual Calibration

The process is semi-automatic. When prompted by the software, you will be asked to select Ohms Four-wire, AC Volts and DC Volts on the DVM and enter more than 40 readings.

IMPORTANT

Make sure that the DVM is set up correctly when prompted AND in the best way to achieve optimum accuracy.

It is VERY IMPORTANT to set Ohms FOUR-WIRE mode, whenever the software prompts for ohm measurement.

DVM readings must be entered into the software to 5 significant figures, and with the decimal point in the normal position.

For example, if the meter displays 0.1234567k Ω , then enter 123.46 into the software.

At the end of calibration, the process of verification will begin, and you will be asked to confirm the connections as above. Further readings will be required from the DVM.

Note that the new calibration factors are NOT stored within the tester until verification has been completed successfully. This is to ensure that the tester is never rendered inoperable if something should go wrong during the calibration process.

Please refer to the 'TROUBLESHOOTING' chapter of this manual, if you see any unusual error messages or warnings during calibration.

3.3.4 Summary of Entered Data

Time and date

COM port and company name

Calibration fixture serial number*

Capacitor value*

Inductor value*

DVM serial number*

DVM model (manual calibration only)*

* Data that must be entered every time a calibration is performed.

3.4 PRINTING CALIBRATION AND VERIFICATION CERTIFICATES

After a successful verification, certificates of conformance and calibration can be printed, together with verification results. Simply choose '3' from the PC software opening menu.

The conformance certificate should be signed by an authorized person, according to your company's quality procedures.

3.5 VERIFICATION ONLY

Verification is used to confirm a successful calibration by verifying that the tester accurately makes measurements on the pre-calibrated resistors, inductor and capacitor. High voltages (as used for the magnetizing current and Hi-pot tests of the AT3600) are also checked.

Verification can be performed at any time after calibration to confirm the validity of the last calibration, but normally it is just used as part of the calibration process.

3.6 PRE-CALIBRATION VERIFICATION

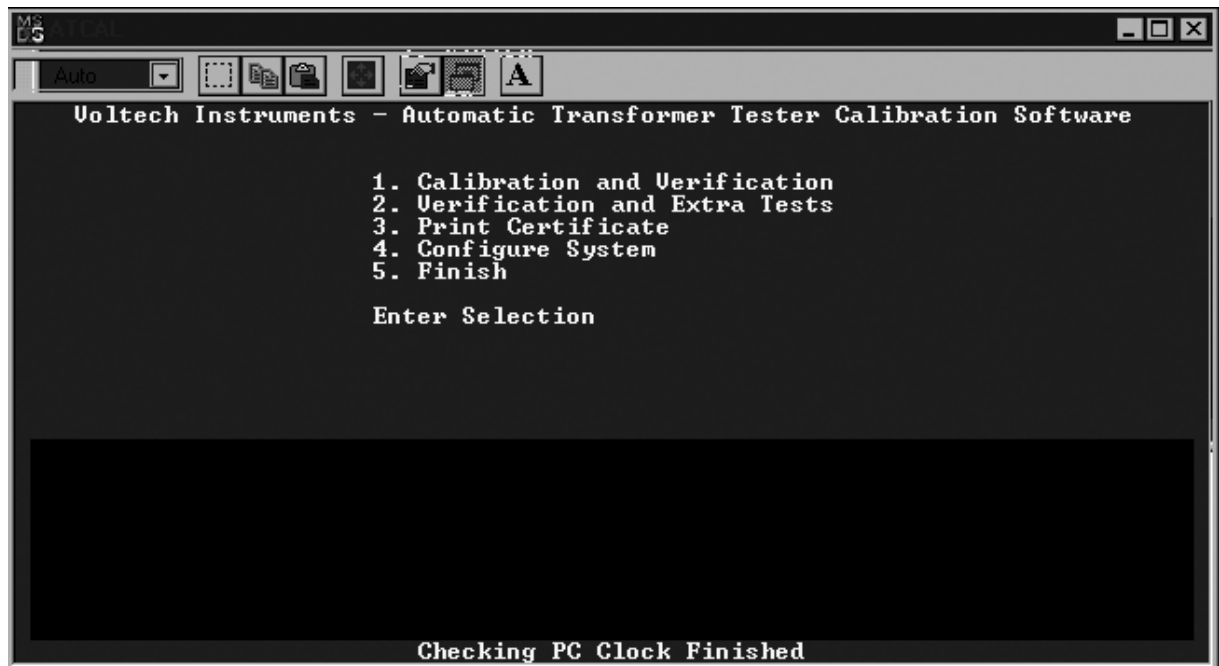
Pre-calibration verification is used to confirm that the tester conforms to its published specification and accurately makes measurements on the pre-calibrated resistors, inductor and capacitor.

High voltages (as used for the magnetizing current and Hi-pot tests of the AT3600) are also checked during this process.

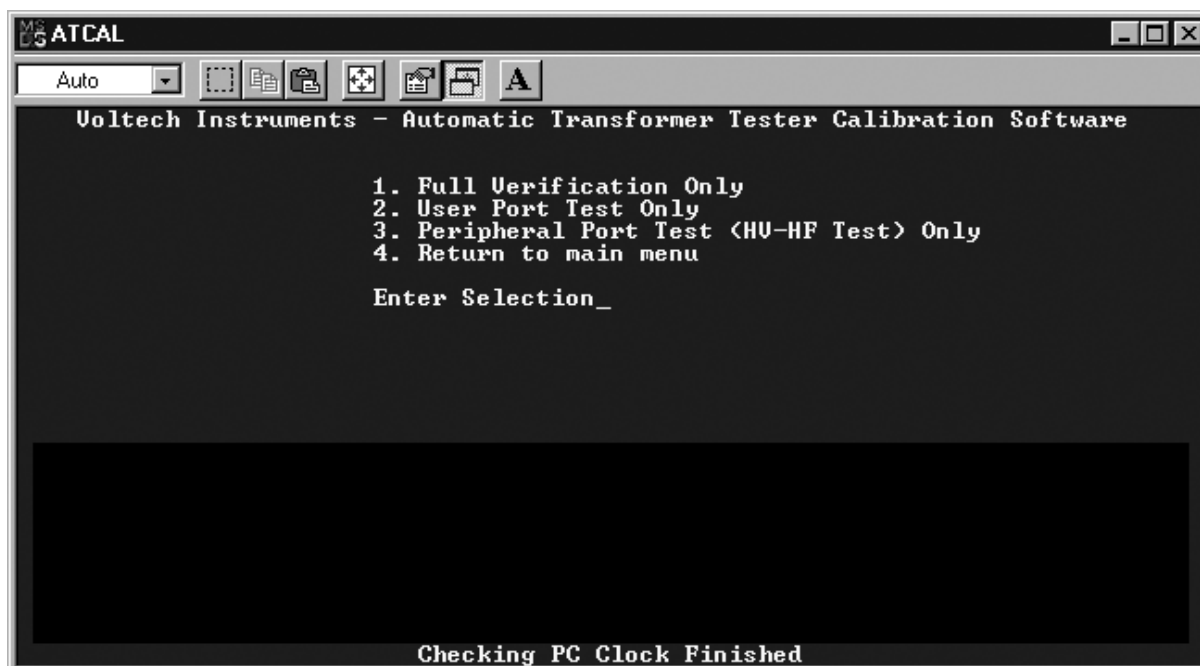
Pre-calibration verification can be performed at any time prior to calibration to confirm the validity of the most recent calibration. As part of the pre-calibration verification process, pass or fail verification reports may be printed.

3.6.1 Starting Pre-Calibration Verification

Start the calibration software and, from the main menu, choose '2. Verification and Extra Tests'.



Next, enter '1' for 'Full Verification Only' to begin the pre-calibration verification process.



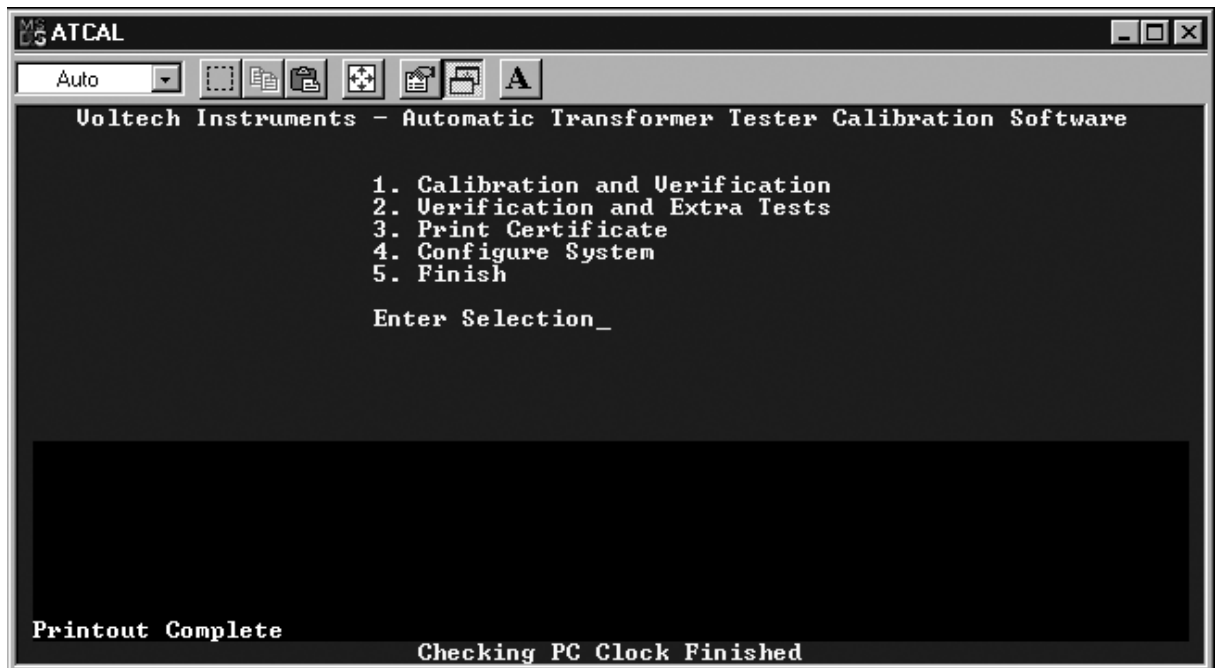
Then, you will go through a series of screens prompting you to enter and verify information concerning the calibration fixture and the DVM. It is important to enter this information correctly because it is what will be used on the final pre-calibration verification report. (See section 3.3.3 for more detail on how to correctly enter this information.)

When you have finished entering the data for the calibration fixture, you will be prompted to connect the DVM to the IEEE bus of the PC and to the calibration fixture. At this time, you may also fit the calibration fixture to the top of the AT series tester and connect the fixture to the tester. (See section 3.3.3 for more information on how to make these connections.) Then, hit 'Enter'.

Finally, you will be prompted to enter the serial number of the DVM and to connect the AT series tester to the PC via a serial link. Hit 'Enter', and pre-calibration verification will begin.

3.6.2 Printing Pre-Calibration Verification Reports

Once the pre-calibration verification process is complete, return to the main menu and choose '3. Print Certificate' to print a formal pass or fail pre-calibration verification report.



3.7 STORED CALIBRATION DATA

The AT calibration software produces data files that are in CSV (comma-separated, variable) format for importing into common spreadsheet and database programs.

These files are stored in directories that are placed in the installation directory. The directory name is the serial number of the instrument that has been calibrated or verified.

Two files are produced - one called 'calib.csv' after a calibration has been performed and another called 'verify.csv' after verification.

New results are appended to these files after each calibration or verification takes place to build up a picture over time. These stored results can be used to track the instrument's drift over time and change the calibration interval if desired.

4 Calibrating the Fixture

4.1 CALIBRATING THE FIXTURE

None of the components that are used during the calibration procedure require calibration as the system uses the precision voltmeter to accurately measure the values of these components at the time of calibration.

However, there are two components on the fixture that are only used during verification. These are a capacitor and an inductor. Before a new calibration system is shipped from Voltech Instruments, these two components are accurately measured with NPL/NIST traceable instruments, and the measured values are written in the table on the underside of the fixture.

These components should be measured accurately every year. It is not necessary to have these components calibrated by an accredited calibration laboratory. However, the equipment used must have a traceable calibration and an accuracy typically better than 1.0% at the test conditions below. The traceable uncertainty of these measurements is transferred to the uncertainty of the verification only. The overall calibration of the ATs to be calibrated is not affected by these verification measurements.

Component	Nominal Value	Test Voltage	Test Frequency
Capacitor	100pF	5V	10kHz
Inductor	1mH	100mV	3kHz

Further, the meter must be capable of Kelvin (four-wire) measurements and have facilities for open-circuit and short-circuit compensation.

If you do not have the equipment required to do this, it is normally possible to hire it. Alternatively, you may contact your local Voltech supplier to arrange to have the fixture calibrated.

5 Warranty and Service

5.1 WARRANTY

The AT Series Calibration System (System) is warranted against defects in materials and workmanship for a period of twelve (12) months from the date of shipment.

In the event of failure of a System due to faulty materials or workmanship during this period:

Voltech will, at their discretion, either repair or replace the faulty system free-of-charge. Shipment of the faulty System to the nearest authorized Voltech service center shall be the responsibility of the customer.

Voltech shall pay the return shipment charges from the Voltech authorized service center to the customer.

Measure the verification components on the System before dispatch and provide the measured values to the customer.

5.2 LIMITATION OF WARRANTY

This warranty shall not apply to defects resulting from unauthorized modification or misuse of the System. Voltech shall be the sole arbiter in these cases. No other warranty is expressed or implied.

While every care has been taken in compiling the information in this manual, Voltech Instruments cannot accept legal liability for any inaccuracies contained herein.

Voltech Instruments has an intensive program of design and development, which may alter product specification. Voltech reserves the right to alter specification without notice and whenever necessary to ensure optimum performance from its product range.

Because software is inherently complex and may not be completely free from errors, in no event, will Voltech be liable for direct, indirect, special, incidental or consequential damages arising out of the use of or inability to use software or documentation, even if advised of the possibility of such damage. In particular, Voltech is not responsible for any lost profits or revenue, loss of use of software, loss of data, cost of substitute software, claims by third parties, or for other similar costs. In no case shall Voltech's liability exceed the amount of the license fee.

5.3 SERVICE

Should this product become faulty outside the warranty period, contact your local Voltech supplier who will be able to advise you on the cost of repair and where to send the faulty System.

DANGER OF ELECTRIC SHOCK

Do not attempt to repair the System. The Voltech AT Series Testers can produce lethal voltages during calibration. Incorrect repairs to the System could result in these voltages being accessible to the operator or damage to the tester.

6 Specification and EMC Compliance

6.1 SPECIFICATION

Resistors

1% metal film. Temperature coefficient 50 ppm/°C

True Kelvin connections on all except the high-voltage attenuator

Capacitor

Polystyrene dielectric. Tan δ better than 0.0005

Temperature coefficient -50 to -170 ppm/°C

Inductor

Air-cored. Temperature coefficient 2 ppm/°C

Operating Environmental Conditions

Storage temperature range -40 °C to 70 °C

Operating temperature range 0 °C to 40 °C

(18 °C to 28 °C for accurate calibration)

Humidity 10% to 90% non-condensing

PC Minimum Requirements

386 processor

4 MB RAM

One spare serial port (COM1 or COM2)

MS-DOS 6 Operating system

Tested on Microsoft Windows 3.1 and 95

Connectors:

Earth terminal 4mm safety socket

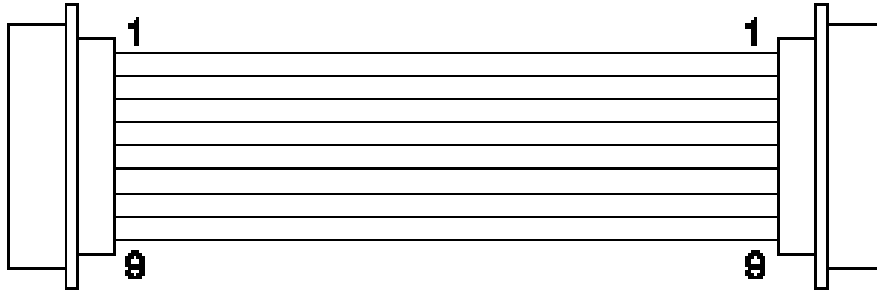
DVM connection 4mm safety socket

User port 9-way D-type female

Peripheral port 15-way D type female

6.2 CABLE SCHEMATICS

User Port Connection Cable

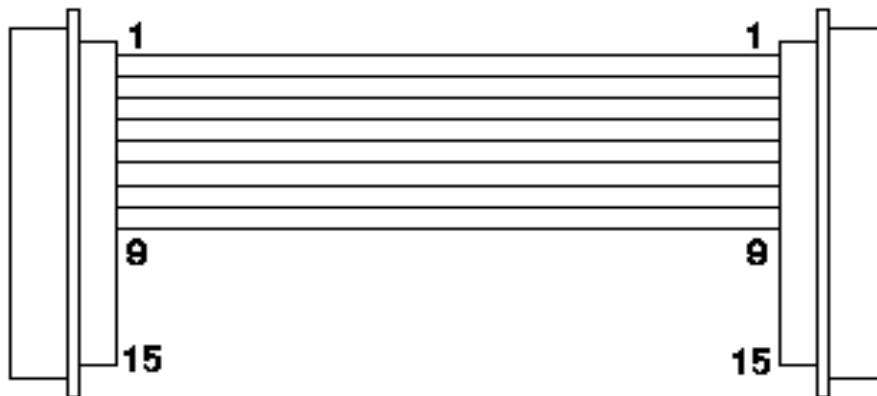


9-way male to 9-way male D-type

All pins connected pin to pin

0.5 meters long

Peripheral Port Connection Cable



15-way male to 15-way male D-type

Pins 1 through 9, connected pin-to-pin

0.5 meters long

6.3 DECLARATION OF CE CONFORMITY

DECLARATION OF CONFORMITY

Manufacturer's Name Voltech Instruments Ltd

Manufacturer's Address 65 Milton Park
Abingdon, Oxon
United Kingdom

declares, that the product

Product Name: AT Series Calibration Fixture

Model Number: ATCAL

conforms to the following Product Specifications when used as directed with an AT series transformer tester:

Safety: BS EN 61010 (1993)

EMC: BS EN 55022 (1995): Class A
BS EN 50082-2 (1992)

Supplementary Information: The product herewith complies with the requirements of the EMC Directives 89/336/EEC and 92/31/EEC and the Low Voltage Directive 73/23/EEC

Signed for on behalf of Voltech Instruments Ltd


Tim Keep, Engineering Manager

Abingdon, United Kingdom, March 30, 1999

6.4 EMC PRECAUTIONS

Conducted and Radiated Emissions

The AT Calibration Fixture complies with the limits of BS EN 55022, Class A, when used as directed with an AT series transformer tester.

Immunity

The AT series tester used with the calibrator may be susceptible to fast electrical transient on the power line and to electrical discharges, which can disrupt the operation of the unit.

Should such an event occur, the AT series tester and calibration fixture can be returned to normal operation by:

Switching off the tester.

Waiting 5 seconds.

Switching the tester back on again.

7 Voltmeter Specification

7.1 SPECIFICATION FOR SUITABLE VOLTMETER

To calibrate an AT series tester with the Voltech Calibration System, a precision digital voltmeter (DVM) is required. Fully automatic calibration can only be performed with an HP3458A, but several other meters will be suitable for semi-automatic calibration, as long as they conform to this specification.

The DVM must be capable of performing four-terminal DC resistance measurements, as well as ac and dc voltage measurements.

The input impedance of the voltage measurement channel in the DVM must be at least 2M Ω at all times.

Table of Measurement Points and Required Accuracy

The table overleaf shows the voltage or resistance being measured, and the frequency at which the measurement is made. For each measurement, it shows the required accuracy. Use this table to decide whether a particular DVM will be suitable for calibrating your AT series tester.

Please note that the accuracy shown is the worst-case accuracy, considering all sources of error within the DVM. When considering a DVM, be sure to use its full accuracy specification.

DC Resistance

Measured Value	Frequency	Maximum Error
500m Ω	DC	0.05%
75 Ω	DC	0.01%
235 Ω	DC	0.01%
750 Ω	DC	0.01%
7.5K Ω	DC	0.01%

DC Voltage

Measured Value	Frequency	Maximum Error
200mV	DC	0.005%
600mV	DC	0.005%
2V	DC	0.003%
4V	DC	0.003%
600V	DC	0.005%

AC Voltage

Measured Value	Frequency	Maximum Error
404mV	100Hz	0.04%
404mV	1KHz	0.05%
404mV	10KHz	0.05%
404mV	16.4KHz	0.05%
404mV	100KHz	0.70%
404mV	262KHz	0.70%
404mV	500KHz	2.00%
404mV	1MHz	3.00%
404mV	3MHz	5.00%
5V	256Hz	0.04%
17V	256Hz	0.08%
50V	256Hz	0.06%
170V	256Hz	0.10%
250V	256Hz	0.10%

8 Troubleshooting

If you have any problems installing or using the calibration system, your Voltech supplier will be pleased to help you, and you should not hesitate to call.

It will help Voltech to get you the best possible remedy to any fault, if you have as much information available as possible. This includes the serial numbers of the AT and calibration fixture, the firmware version of the AT, and the calibration software revision.

The list of possible faults and remedies below is not exhaustive but may help you to overcome some common problems.

8.1 'FAILURE TO COMMUNICATE WITH THE DVM' IS SHOWN AT THE BEGINNING OF CALIBRATION.

There is a problem with IEEE488 communications to the DVM.

If you are intending to calibrate manually you must use the command line 'c:\atcal\atcal.exe -m'. See section 2.2. Note that there is a space between atcal.exe and ' -m'.

Check HP3458A IEEE ADDRESS is set to 22.

If you are intending to calibrate automatically, please check that your IEEE488 interface is fitted and working properly, the DVM is switched on and the DVM and PC IEEE488 interfaces are connected together. Check that you are using the latest MS-DOS drivers (you may need to call the interface manufacturer). As a minimum, you should be able to run the PC IEEE488 interface's diagnostic software and get some response from the DVM.

8.2 THE AT SERIES TESTER FAILS 'SELF TEST' AT THE BEGINNING OF CALIBRATION.

Check that there is no fixture fitted, and that the tester has been warmed up properly.

If the tester still fails 'self-test' when repeated, call your supplier for advice.

8.3 CALIBRATION OR VERIFICATION FAILURE

If the software detects a calibration constant that is outside pre-specified limits, a calibration error will be reported. Retry if that option is available.

If the problem persists, it may be due to:

Lack of warm-up.

Noise on DVM leads.

Calibration fixture not seated properly into the tester.

DVM not set up properly. (Manual calibration - Four-Wire resistance is very important.)

Fixture verification components (L & C) need calibration.

A problem with the tester.

8.4 CERTIFICATES DO NOT PRINT.

Check that a printer is connected to LPT1 of your PC. If you are trying to use a network printer, the port LPT1 must be 'captured'.

Consult your network administrator or see the Windows help system under 'Printers, Network, Ports' for how to 'capture' a printer port.

8.5 ERRORS DURING 'HIGH VOLTAGE' CALIBRATION.

Check that a safety interlock system has been fitted, and that it has not been interrupted during calibration and verification.

This applies to the AT1600 and AT3600 only. See your tester's user manual for complete information.

8.6 'ERROR: VOLTAGE MEASUREMENT BY DVM OUTSIDE LIMITS'.

The DVM measurement is far away from the expected value.

DMM health

The HP3458A has an AUTO CAL function that checks general unit operation. Please run this to check DMM health.

This should be performed with NOTHING connected to the HP3458A and takes about 10 minutes. It should only be performed when the HP3458A has been warmed up Please see HP3458A manual for more details

Automatic calibration or verification:

Check the DVM is connected properly (sense to sense, hi to hi, etc.).

Check the calibration fixture is located properly into the AT and tightened down.

Retry the measurement.

Manual calibration or verification:

Check the DVM is connected properly (sense to sense, hi to hi, etc.).

Check the calibration fixture is located properly into the AT and tightened down.

Choose an appropriate manual range for the DVM measurement.

Retry the measurement.

8.7 (MANUAL CALIBRATION OR VERIFICATION) – DVM READING STEADILY DRIFTS DOWNWARDS.

The AT has tripped because the DVM was on too low a voltage range.

Choose an appropriate manual range on the DVM, enter '0' as the value and then retry the measurement.

8.8 CALIBRATION OR VERIFICATION CERTIFICATE STATES 1MHZ RATHER THAN 3MHZ

The '-1' switch has been used on the command line to force this so that calibration can be performed with a 1MHz meter. See the installation section of this manual. Also, some testers manufactured before 1999 cannot be calibrated to 3MHz. Contact your supplier with the firmware revision level and serial number of your tester for advice if you suspect this is the case.